

Nan Chiau Primary School Parents Support Group

P1 Orientation 2020 (Virtual)



Parent
Support
Group

Established in 2001

By and For parents

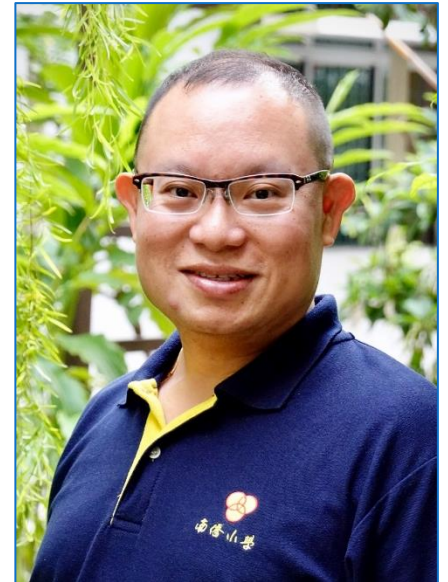
whose children are already in the school...



Parent
Support
Group

Our Mission

To be an **Active** and **Effective** partner collaborating with the school in educating and shaping our children into passionate and self-directed learners.



TANG Hwee Tong
PSG Chairman



Parent
Support
Group

Our Roles

1. Support the school in activities that enhances the students' welfare and development.
2. Collaborate with the school on projects that make the students' primary education memorable.
3. Be the constructive communication bridge between parents and the school.
4. Enable parents' networking and enrichment.



Parent
Support
Group

Parents Support Group (PSG) Committee

1. Safety Support Committee (SSC)
2. Library Support Committee (LSC)
3. Academic Support Committee (ASC)
4. Membership and Corporate Support (MCS)



Parent
Support
Group

Safety Support Committee (SSC)



Enhance the safety of the students by promoting good safety habits



Canteen

To cultivate good behaviour and responsibility in the canteen. Maintaining order during recess and school dismissal



Gate

Ensure safety of the students during school dismissal at the various gates



Parent
Support
Group

Safety Support Committee (SSC)



This committee mans the identified high traffic areas during peak periods to enhance the safety of the pupils



Parent
Support
Group

SSC Members on duty



Parent
Support
Group

SSC Gathering Party!



Parent
Support
Group

Safety Support Operating Hours

Safety Duty During Recess

- Parade Square and Gardens
9.00am to 10.30am
10.30am to 12.00pm
Monday to Friday *



Parent
Support
Group

*** Deployment of duty is every once a week**

Library Support Committee (LSC)



Assist school librarian to mend library books



Support the school to create a neat and conducive studying environment



Inculcate good reading habits to the young



Upkeep and shelf books



Parent
Support
Group

Library Support Committee



1. General up keeping of the library
2. Assisting school librarian to mend the library books
3. Support the school to create neat and conducive studying environment (after school dismissal)
4. Inculcate good reading habits to the young



Parent
Support
Group

LSC Party Time!



Parent
Support
Group

Library Support Operating Hours

Library Duty During Recess

- School Library
9.30am to 11.30am
Monday to Friday *

Library Duty After School Dismissal

- School Library
2.00pm to 3.30pm
Monday to Friday *

* Deployment of duty is every once a week



Parent
Support
Group

Academic Support Committee (ASC)



Conduct P1 & P2 Kids Reading Program



Provide additional attention for students in English & Chinese languages



Helps the students to follow the teachings of the class



Parent
Support
Group

Academic Support Committee



Kids Read Program for P1 & P2

1. Provide additional attention for students in English & Chinese languages
2. Helps our children to follow the teachings of the class



Parent
Support
Group

Academic Support Committee



Parent
Support
Group

Academic Support Operating Hours

English Reading

- School Library
2.00pm to 3.00pm
Tuesday or
Wednesday
(Temporary no
deployment)

Chinese Reading

- School Library
2.00pm to 3.00pm
Thursday Only

(Temporary no
deployment)



Membership & Corporate Support Committee (MCS)



Recruitment and parent engagement arm of PSG



Provide ad-hoc resources for activities



Bridging between School and PSG



Backend support for events



Parent
Support
Group

MCS Team



Parent
Support
Group

Major PSG Activities

We provide support and undertake projects that are identified in the PSG's work plan objectives.

1. P1 First Day in School – JAN
2. Chinese New Year Celebration (Packing of Oranges) – JAN / FEB
3. Charity Food Donation – FEB
4. Induction Session for New Members – FEB / MAR
5. Parent Child Bonding – MAY / JUN
6. P1 Phase 2C Registration – JUL
7. Racial Harmony Day – JUL
8. Children's Day Carnival – OCT
9. Education & Career Guidance Fair – NOV
10. PSG Appreciation Lunch & Long Service Awards Ceremony – NOV
11. P1 Orientation – NOV



Parent
Support
Group

P1 First Day in School 2020



Parent
Support
Group

Chinese New Year 2020



Parent
Support
Group

Charity Food Donation 2019



Induction Session for New PSG Members 2019



Parent
Support
Group

Parent Child Bonding



Parent
Support
Group

Racial Harmony Day 2019



Parent
Support
Group

Children's Day Carnival 2019



Children's Day Carnival 2019



Parent
Support
Group

Children's Day Carnival 2019



Parent
Support
Group

Education & Career Guidance (ECG) Fair 2019



Parent
Support
Group

Education & Career Guidance (ECG) Fair



Parent
Support
Group

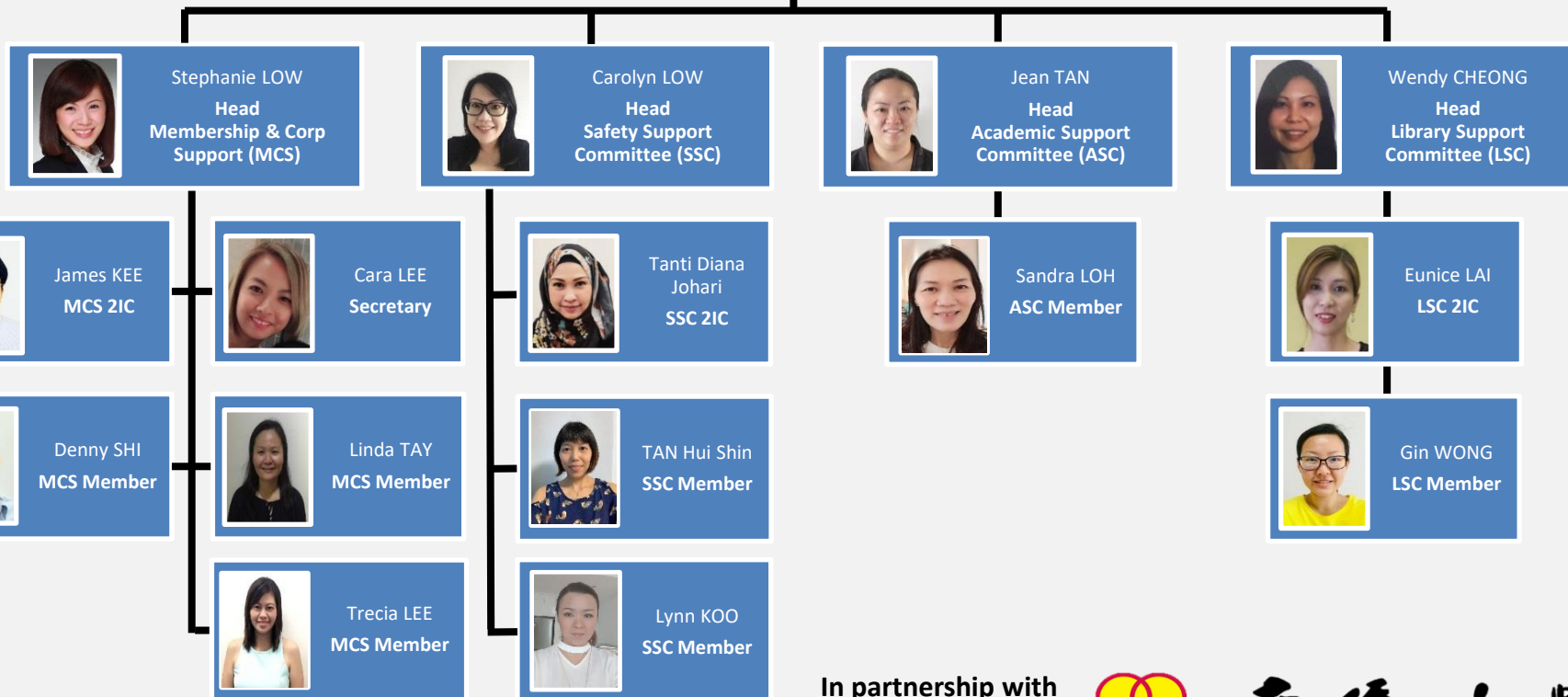
PSG Planning Council for Year 2021



Parent
Support
Group



TANG Hwee Tong
Chairman



In partnership with



Founded 1947

南僑小學

NAN CHIAU PRIMARY SCHOOL



Working With Parents for Parents

Scan to join the NCPS PSG



NCPS PSG QR Code



Parent
Support
Group

In partnership with



Founded 1947

南橋小學

NAN CHIAU PRIMARY SCHOOL

**Looking forwards to
your joining**

Thank you and have a nice day!



**Parent
Support
Group**